

Jacco
maris



ace suspension lamp circle

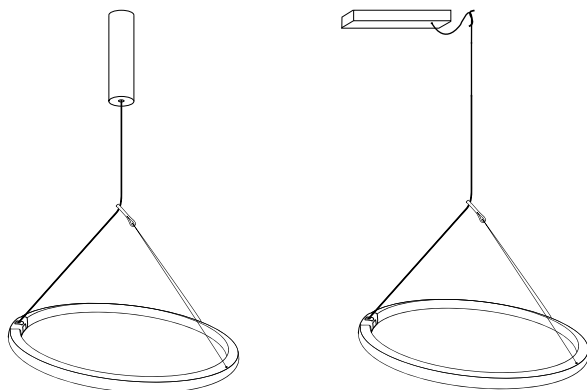
The Ace is a special LED circle fixture with rough leather details and a unique suspension. With his suspension on only one cable this circle is super adjustable by moving its smart leather tab. The Ace has a warm light, which creates a very soft atmosphere. The u-shaped steel profile is powder coated and available in several colors. Because of the different driver box types the Ace is multiple applicable. The Ace is designed by Jacco Maris in cooperation with Meneer Voss.

Dimensions

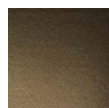
Ø 60cm

Ø 85cm

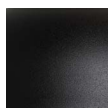
Ø 110cm



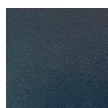
colors & materials



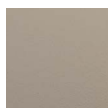
anodic brown
powder coated



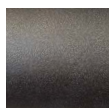
black
powder coated



gunmetal
powder coated



latte
powder coated



marone
powder coated



white
powder coated

For ordering or more information please contact your dealer or contact us for a dealer.
Check www.jaccomaris.com for the latest details.